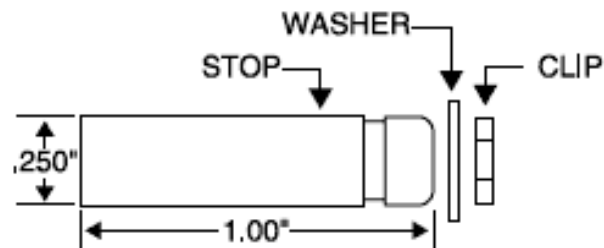




For use in posts with cables cut and fittings attached at the factory. No field swaging is required. A special clip and washer secure the Stop to the end post. Used on the non-tensioning end of the cable. An Adjust-A-Jaw®, Adjust-A-Body™ or Invisiware® Receiver is used on the opposite end to tension the cable. Available for 1/8" and 3/16" diameter cable only. Includes Stop, Washer and Clip. Determine hardware for tensioning end and check with the factory to determine cable lengths to be provided with swaged fittings.



Type 316 Stainless Steel			
Cable Dia.	For Use With	Washer Dia.	Part No.
1/8"	Wood Post	59/64" (.922)	20AC4W
3/16"	Wood Post	59/64" (.922)	20AC6W
1/8"	Metal Post	15/32" (.468)	20AC4M
3/16"	Metal Post	15/32" (.468)	20AC6M