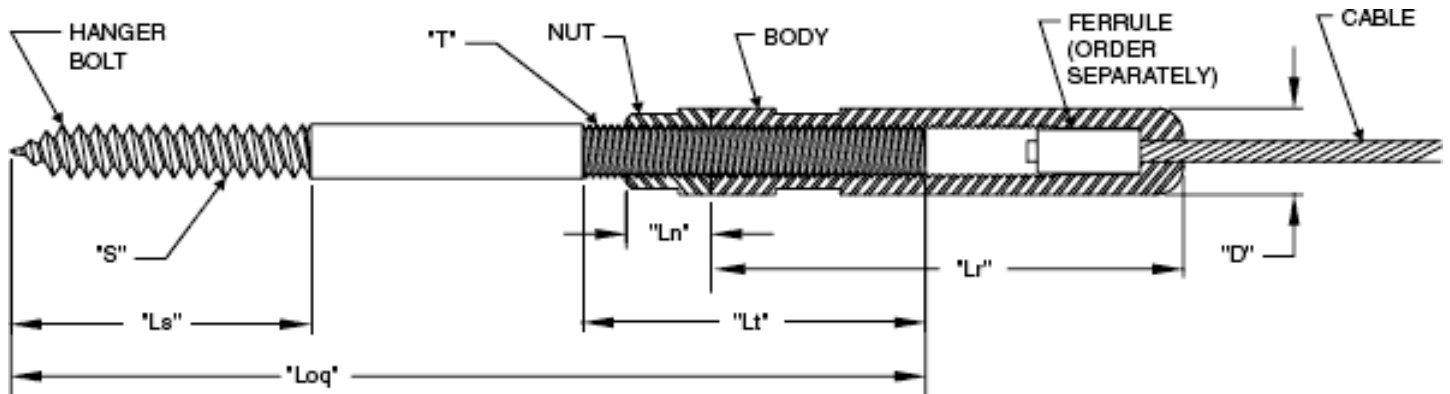


## Adjust-A-Body with Extended Hanger Bolt Tensioner System



Same as the above tensioner, except the hanger bolt is 1-1/2" longer, allowing you to penetrate deeper into the post or wall if necessary. Available for use with 1/8" and 3/16" cable.



**adjust-a-jaw body nut with hanger bolt  
type 316 stainless steel**

Cable Dia.	Use With Ferrule*	S	T (L.H.)	Ls	Lt	Loq	Ln	Lr	D	Drill Size Required	Minimum Nominal Timber Size	Part No.
1/8"	20FF4	5/16"	5/16-24	1.50"	2.00"	5.25"	.375"	2.75"	.500"	13/64"	4 x 4	20AXLB4
3/16"	20FF6	5/16"	5/16-24	1.50"	2.00"	5.25"	.375"	2.75"	.500"	13/64"	4 x 4	20AXLB4

\*Order ferrule separately.