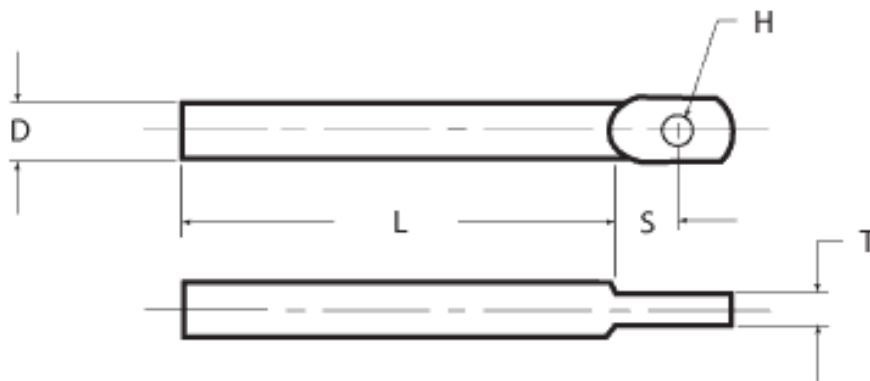




The Fixed Tab is a frame component. The Fixed Tab is cut to length if necessary and welded into one of our standard end posts to facilitate the use of a Fixed Jaw or an Adjust-A-Jaw® fitting. After the Fixed Tab is welded into the outside wall of the end post, the welded surface is ground to its original contour, thus hiding the weld.



Fixed Tab						
Available in carbon steel and stainless steel						
Cable Dia.	D	H	S	T	L	Part No.
1/8"	.375"	.265"	.44	.233"/.229"	2.94"	20HFT4
3/16"	.375"	.265"	.44	.233"/.229"	2.94"	20HFT4
1/4"	.562"	.390"	.68	.295"/.285"	2.94"	20HFT8

* To specify add "A" for Carbon Steel or "B" for Stainless Steel