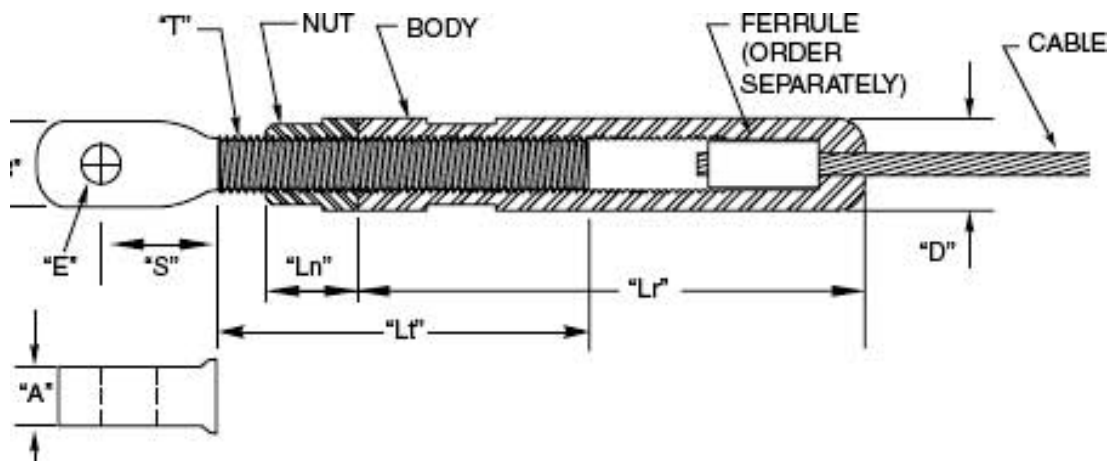




Similar to the Adjust-A-Jaw® Tensioner, except it *costs a lot less than the clevis-style Adjust-A-Jaw® Tensioner*. See the tabulated drawing to determine how to interface this fitting with your end post, or use our Fixed Tab or Threaded Tab fittings. Tension with an open-end wrench.



Type 316 Stainless Steel

Cable Dia	*Use with Ferrule No.	*Use with Screw No.	E thread	A	B	S	T	Lt	Ln	Lr	D	Part No.
1/8"	20FF4	11HCS8	1/4-28	.233"/.299"	.500"	.44"	5/16-24 L.H.	2.00"	.375"	2.75"	.500"	20ATE4
3/16"	20FF6	11HCS8	1/4-28	.233"/.299"	.500"	.44"	5/16-24 L.H.	2.00"	.375"	2.75"	.500"	20ATE4
1/4"	20FF8	11HCS12	3/4-24	.295"/.285"	.844"	.68"	7/16-20 L.H.	2.50"	.500"	3.00"	6.25	20ATE8

*Order ferrule and screw separately.