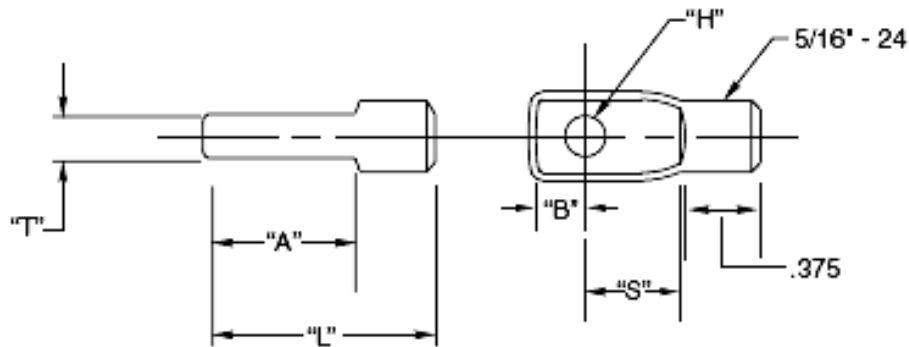




The Threaded Tab is screwed into the inside wall of an end post for use in mounting an Adjust-A-Jaw® Tensioner or Fixed Jaw Fitting.



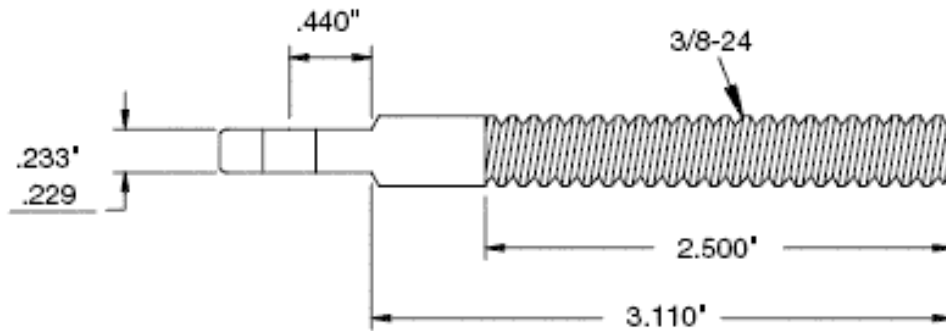
Available in Type 3/16 Stainless Steel

Cable Dia.	Use with Adjust-A-Jaw, Adjust-A-Body or Fixed Jaw Fitting	H	S	T	A	B	L	Part No.
1/8"	20AAJ4, 20ATE4 20FFJ4	.265"	.500"	.233"/.229"	.813"	.313"	1.250"	20HTT4
3/16"	20AAJ4, 20ATE4 20FFJ4	.265"	.500"	.233"/.229"	.813"	.313"	1.250"	20HTT4
1/4"	20AAJ8, 20AAJ10 20ATE8, 20FFJ8 20FFJ10	.390"	.700"	.295"/.285"	1.250"	.563"	1.687"	20HTT8
5/16"	20AAJ8, 20AAJ10 20ATE8, 20FFJ8 20FFJ10	.390"	.700"	.295"/.285"	1.250"	.563"	1.687"	20HTT8
3/8"	20AAJ8, 20AAJ10 20ATE8, 20FFJ8 20FFJ10	.390"	.700"	.295"/.285"	1.250"	.563"	1.687"	20HTT8

Invisiware® Extended Length Threaded Tab



Extended length, same as above except there is no need to thread the hole in the end post. Cut to desired length and secure to end post with acron nut and thread sealant.



Cable Dia.	Part No.	Use with S.S. Acron Nut*
1/8"	20HXTT4	11HCN12R
3/16"		
* Order Arcon Nut Separately		