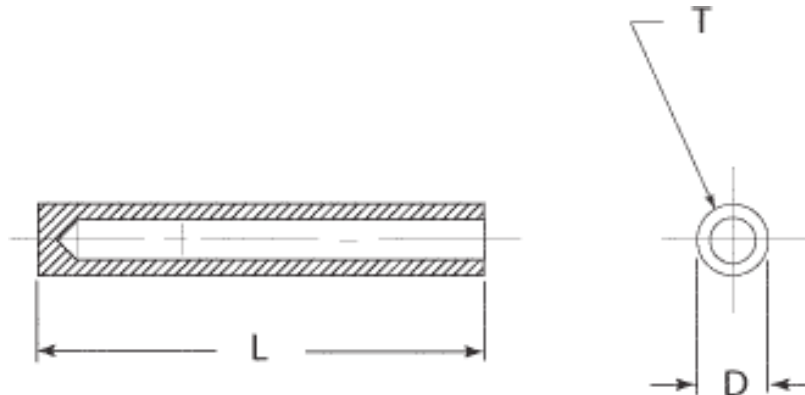




The Welded Receiver is actually a frame component. The Welded Receiver is used much the same as an Invisiware® Receiver and Stud, except that the Welded Receiver does not provide for any take-up adjustment after the Stud is installed into it. The Welded Receiver is cut to length if necessary and welded into the outside wall of an end post. After the Welded Receiver is welded, the surface that is welded is ground to the original contour, thus hiding the weld. The female thread within the Welded Receiver accommodates our Swaging Stud. This arrangement creates a completely hidden end post fitting, and when combined with an Invisiware Receiver and Stud on the opposite end of the same cable, makes up our most streamlined combination of hardware.



| Welded Receiver | | | | | |
|--|-------------------|-------|---------|-------|-------------|
| Available in Carbon Steel and Stainless Steel | | | | | |
| Cable Dia. | Use with stud no. | D | T | L | Part Number |
| 1/8" | 20FS4 | .437" | 5/16-24 | 2.82" | 20FWR4* |
| 3/16" | 20FS6 | .437" | 5/16-24 | 2.82" | 20FWR4* |
| 1/4" | 20FS8 | .531" | 7/16-20 | 2.82" | 20FWR8* |
| * To specify add "A" for Carbon Steel or "B" for Stainless Steel | | | | | |